

# The Road to Reinvention

**ANNE PRAMAGGIORE**

**SENIOR EXECUTIVE VICE PRESIDENT AND CEO, Exelon Utilities**

---

**KLEINMAN CENTER FOR ENERGY POLICY | NOVEMBER 29, 2018**





**Reliable**



**Safe**



**Affordable**



**Clean**

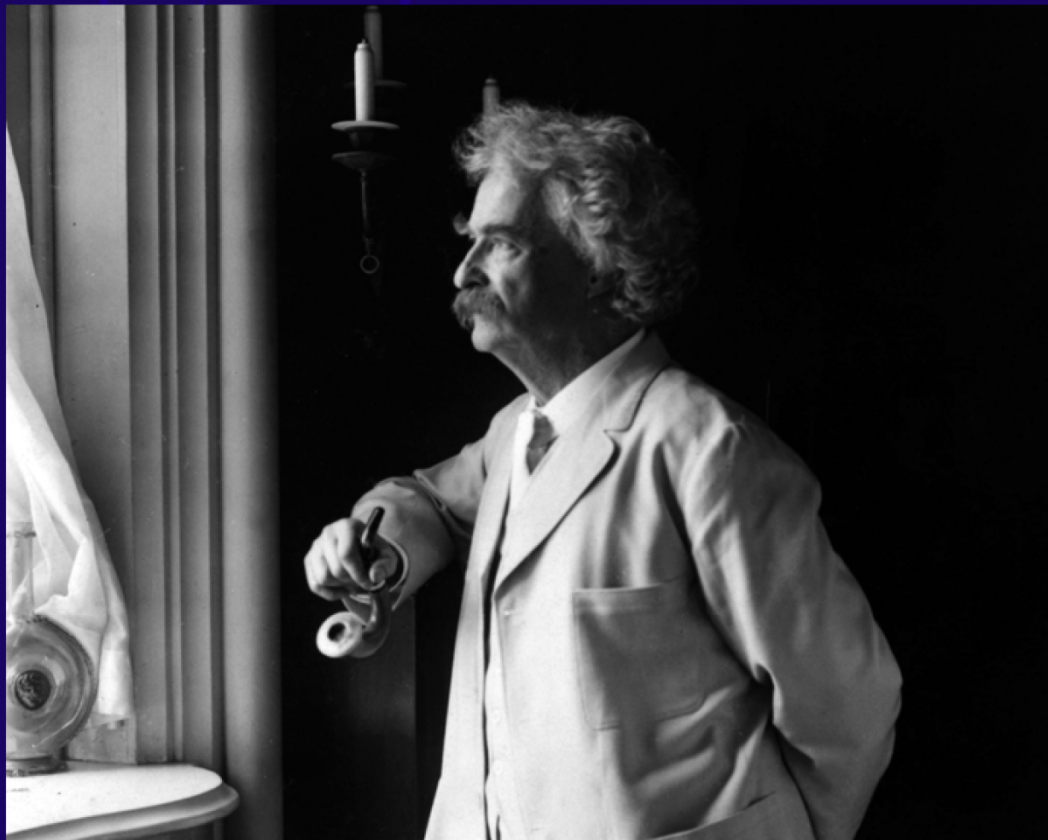


**Resilient**



**Custom but  
Connected**

# Reports of the Grid's Death are Greatly Exaggerated.



“There is a central difference between the old and new economies: the old industrial economy was driven by economies of scale; the new information economy is driven by the economics of networks.”

**Carl Shapiro**

UC Berkeley Professor

# Connected Communities will play out over time: what are the logical stages and how will these evolve creating value for customers





**Modernize**



**Resiliency  
and Security**



**Customer Choice  
and DER  
Acceleration**

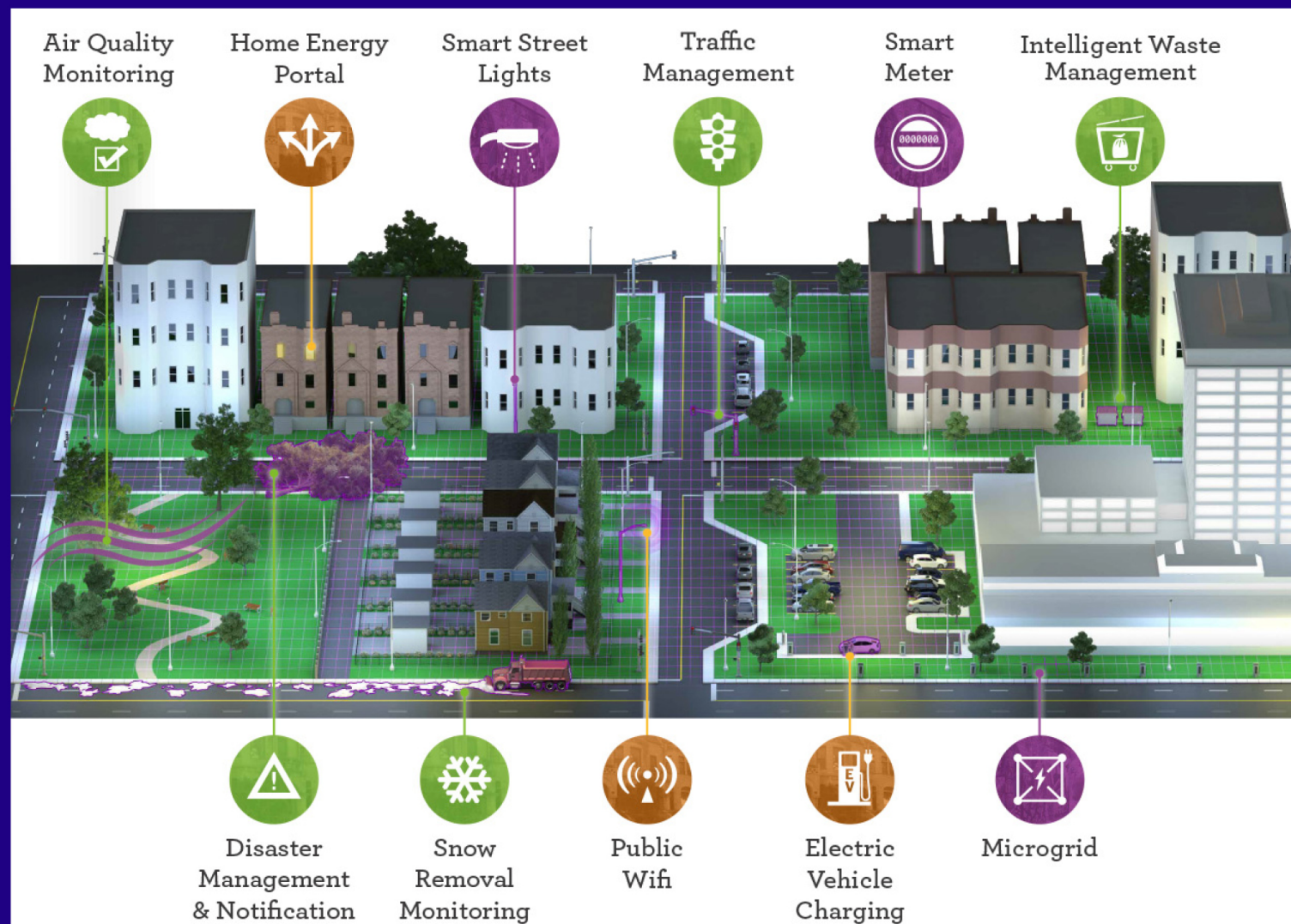


**Decarbonization  
and Electrification**



**Connected  
Communities**

# Microgrid Pilot in Bronzeville







# Technology Leads, But Policy Rules



Thank You



